

SMAD1 phospho Ser195 (rAb), 100 µl

Catalog No: 91693**Clone:** 1K6**Application(s):** WB**Reactivity:** Human**Volume:** 100 µl**Purification:** Protein A Chromatography**Host:** Rabbit**Isotype:** IgG**Molecular Weight:** 52 kDa

Background: SMAD family member 1 (**SMAD1**) have been involved in metastatic progression of many cancer types. **SMAD1** can be induced by many tumor-stimulating cytokines such as the bone morphogenetic protein 2 (BMP2) and TNF α and plays important roles in cell invasion and metastasis. BMP2 signaling is initiated by binding to its specific receptors, which leads to in the phosphorylation and nuclear translocation of Smad1. Translocated **SMAD1** then modulates the expression of downstream osteogenic genes.

Immunogen: This information is proprietary to Active Motif and/or its suppliers.

Buffer: Purified IgG in PBS, pH 7.3, with 50% glycerol and 0.02% sodium azide. Sodium azide is highly toxic.

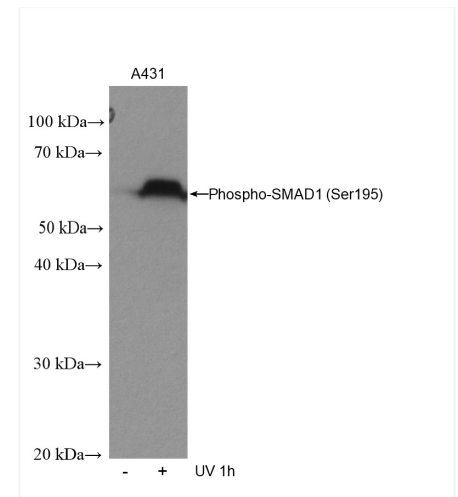
Application Notes:

Applications Validated by Active Motif:

WB: 1:2000-1:10000 dilution

Storage and Guarantee: Some products may be shipped at room temperature. This will not affect their stability or performance. Avoid repeated freeze/thaw cycles by aliquoting items into single-use fractions for storage at -20°C for up to 2 years. Keep all reagents on ice when not in storage. This product is guaranteed for 12 months from date of receipt.

This product is for research use only and is not for use in diagnostic procedures.

**SMAD1 antibody (rAb) tested by Western blot.**

Detection of SMAD1 by Western blot analysis using 30 µg of A431 lysate and probed with SMAD1 antibody at 1:5000 dilution.