

AbFlex® Histone H3, C-terminal antibody (rAb, Mouse)

Catalog Nos: 91297, 91298

RRID: AB_3216308

Application(s): WB

Reactivity: Human

Quantities: 100 µg, 10 µg

Purification: Protein A Chromatography

Host: Mouse

Isotype: IgG2a

Molecular Weight: 17 kDa

Background: AbFlex® antibodies are recombinant antibodies (rAbs) that have been generated using defined DNA sequences to produce highly specific, reproducible antibodies. Each AbFlex antibody contains a 6xHis Tag, a Biotinylation Tag for enzymatic biotin conjugation using the biotin ligase, BirA, and a sortase recognition motif (LPXTG) to attach a variety of labels directly to the antibody including fluorophores, enzymatic substrates (HRP, AP), peptides, drugs as well as solid supports. AbFlex® Histone H3, C-term was expressed as full-length IgG with mouse immunoglobulin heavy and light chains (IgG2a isotype) in CHO cells.

Histone H3 is one of the core components of the nucleosome. The nucleosome is the smallest subunit of chromatin and consists of 147 base pairs of DNA wrapped around an octamer of core histone proteins (two each of Histone H2A, Histone H2B, Histone H3 and Histone H4).

Immunogen: This antibody was raised against a peptide at the C-terminus of human Histone H3.

Buffer: Purified IgG in 140 mM Hepes, pH 7.5, 70 mM NaCl, 32 mM NaOAc, 0.035% sodium azide, 30% glycerol. Sodium azide is highly toxic.

Application Notes:

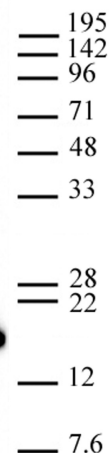
Applications Validated by Active Motif:

WB*: 0.01 – 0.5 µg/ml

*Note: Many chromatin-bound proteins are not soluble in a low salt nuclear extract and fractionate to the pellet. Therefore, we recommend a High Salt / Sonication Protocol when preparing nuclear extracts for Western blot.

Storage and Guarantee: Some products may be shipped at room temperature. This will not affect their stability or performance. Avoid repeated freeze/thaw cycles by aliquoting items into single-use fractions for storage at -20°C for up to 2 years. Keep all reagents on ice when not in storage. This product is guaranteed for 12 months from date of receipt.

This product is for research use only and is not for use in diagnostic procedures.



AbFlex® Histone H3, C-term antibody tested by Western blot. 20 µg of HeLa nuclear extract* was run on SDS-PAGE and probed with AbFlex® Histone H3, C-term antibody at 0.05 µg/ml.