

## AbFlex<sup>®</sup> Notch1 antibody (rAb)

**Catalog Nos:** 91243, 91244

**RRID:** AB\_2793816

**Isotype:** IgG2a

**Application(s):** WB

**Reactivity:** Human

**Quantities:** 100 µg, 10 µg

**Purification:** Protein A Chromatography

**Host:** Mouse

**Concentration:** 1 µg/µl

**Molecular Weight:** 120 kDa

**Background:** AbFlex<sup>®</sup> antibodies are recombinant antibodies (rAbs) that have been generated using defined DNA sequences to produce highly specific, reproducible antibodies. Each AbFlex antibody contains a 6xHis Tag, a Biotinylation Tag for enzymatic biotin conjugation using the biotin ligase, BirA, and a sortase recognition motif (LPXTG) to attach a variety of labels directly to the antibody including fluorophores, enzymatic substrates (HRP, AP), peptides, drugs as well as solid supports. AbFlex<sup>®</sup> Notch1 antibody was expressed as full-length IgG with mouse immunoglobulin heavy and light chains (IgG2a isotype) in mammalian 293 cells.

**Notch1** is a member of the Notch family of receptors, which make up a highly conserved cell signaling system. **Notch1** functions as a ligand-activated transcription factor that directly transduces extracellular signals in the cell surface into changes in gene expression in the nucleus. **Notch1** is membrane bound, serving as an extracellular receptor for the Delta and Serrate family of ligands. Upon activation, the intracellular domain is cleaved and rapidly translocates into the nucleus where it forms a transcriptional complex with the RBP-J DNA binding protein and activates gene expression via recruitment of co-activators of the MAML family. Notch receptors play a critical role in cell fate specification during development and participate in multiple biological processes. Notch signaling is required for undifferentiated embryonic stem cells (ESCs) to participate in the formation of all three embryonic germ layers.

**Immunogen:** This antibody was raised against a recombinant protein corresponding to the intracellular domain of human Notch1.

**Buffer:** Purified IgG in 140 mM Hepes, pH 7.5, 70 mM NaCl, 32 mM NaOAc, 0.035% sodium azide, 30% glycerol. Sodium azide is highly toxic.

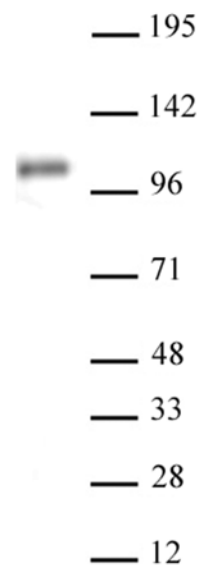
### Application Notes:

Applications Validated by Active Motif:

WB: 1 - 2 µg/ml

AbFlex<sup>®</sup> recombinant antibodies are genetically derived from DNA sequences of parental hybridoma clones. For details on the parental clone, see Catalog No. 61147.

**Storage and Guarantee:** Some products may be shipped at room temperature. This will not affect their stability or performance. Avoid repeated freeze/thaw cycles by aliquoting items into single-use fractions for storage at -20°C for up to 2 years. Keep all reagents on ice when not in storage. This product is guaranteed for 12 months from date of receipt



AbFlex<sup>®</sup> Notch1 antibody (rAb) tested by Western blot. 20 µg of HeLa whole cell extract was run on SDS-PAGE and probed with AbFlex Notch1 antibody at 2 µg/ml.