

## AbFlex® Myc-Tag antibody (rAb)

**Catalog Nos:** 91203, 91204**RRID:** AB\_2793802**Isotype:** IgG2a**Application(s):** WB**Reactivity:** Human, Not Species Specific**Quantities:** 100 µg, 10 µg**Purification:** Protein A Chromatography**Host:** Mouse**Concentration:** 1 µg/µl

**Background:** AbFlex® antibodies are recombinant antibodies (rAbs) that have been generated using defined DNA sequences to produce highly specific, reproducible antibodies. Each AbFlex antibody contains a 6xHis Tag, a Biotinylation Tag for enzymatic biotin conjugation using the biotin ligase, BirA, and a sortase recognition motif (LPXTG) to attach a variety of labels directly to the antibody including fluorophores, enzymatic substrates (HRP, AP), peptides, drugs as well as solid supports. Myc-Tag is a sequence derived from the human c-Myc protein that has been developed into an effective epitope for detection of tagged proteins expressed *in vivo*.

**Immunogen:** This antibody was raised against a peptide corresponding to amino acids 410-419 of human c-Myc (EQKLISEEDL).

**Buffer:** Purified IgG in 140 mM Hepes, pH 7.5, 70 mM NaCl, 32 mM NaOAc, 0.035% sodium azide, 30% glycerol. Sodium azide is highly toxic.

**Application Notes:**

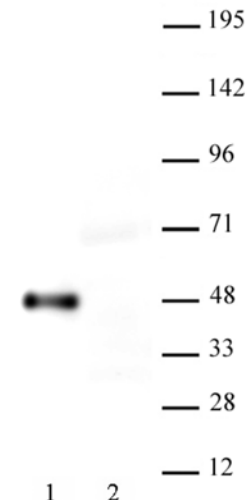
Applications Validated by Active Motif:

WB: 0.5-2 µg/ml dilution

AbFlex® recombinant antibodies are genetically derived from DNA sequences of parental hybridoma clones. For details on the parental clone, see Catalog No. 39279.

**Storage and Guarantee:** Some products may be shipped at room temperature. This will not affect their stability or performance. Avoid repeated freeze/thaw cycles by aliquoting items into single-use fractions for storage at -20°C for up to 2 years. Keep all reagents on ice when not in storage. This product is guaranteed for 12 months from date of receipt.

This product is for research use only and is not for use in diagnostic procedures.



AbFlex® Myc-Tag antibody (rAb) tested by Western Blot.

HEK293T cells were transiently transfected with a Myc-Tagged protein (Lane 1) or with empty vector (Lane 2). Myc-Tagged protein is observed in lane 1 using this antibody.