

## Recombinant Myelin Basic Protein

**Catalog No:** 82017, 82617

**Expressed In:** *E. coli*

**Quantity:** 100, 1000 µg

**Concentration:** 5 µg/µl

**Source:** Human

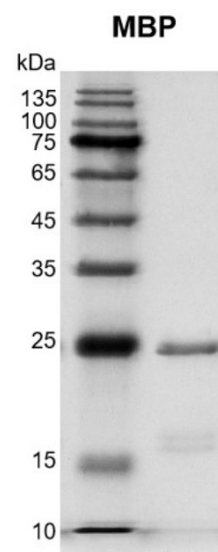
**Buffer Contents:** Recombinant Myelin Basic protein is supplied in 25 mM Tris 8.0, 300mM NaCl, 20% glycerol, 0.5 mM TCEP.

**Background:** The classic group of **MBP** isoforms (isoform 4-isoform 14) are with PLP the most abundant protein components of the myelin membrane in the CNS. They have a role in both its formation and stabilization. The smaller isoforms might have an important role in remyelination of denuded axons in multiple sclerosis. The non-classic group of MBP isoforms (isoform 1-isoform 3/Golli-MBPs) may preferentially have a role in the early developing brain long before myelination, maybe as components of transcriptional complexes, and may also be involved in signaling pathways in T-cells and neural cells. Differential splicing events combined with optional post-translational modifications give a wide spectrum of isomers, with each of them potentially having a specialized function. Induces T-cell proliferation.

**Protein Details:** Recombinant Myelin Basic protein that includes full length of human MBP protein (accession number NP\_001020252.1 ) was expressed in *E. coli* and contains an N-terminal His tag with a molecular weight of 23.79 kDa. The purity of the protein is ≥ 90% by SDS-PAGE.

**Application Notes:** This product was manufactured as described in Protein Details. Where possible, Active Motif has developed functional or activity assays for recombinant proteins. Additional characterization such as enzyme kinetic activity assays, inhibitor screening or other biological activity assays may not have been performed for every product. All available data this product is shown.

**Storage and Guarantee:** Recombinant proteins in solution are temperature sensitive and must be stored at -80°C to prevent degradation. Avoid repeated freeze/thaw cycles and keep on ice when not in storage. This product is for research use only and is not for use in diagnostic procedures. This product is guaranteed for 6 months from date of arrival.



**Recombinant Myelin Basic protein gel.**

12.5% SDS-PAGE gel stained with Coomassie Blue.

MW:23.79

Purity: >90%