

## Recombinant METTL10 protein

**Catalog No:** 81212

**Expressed In:** Baculovirus

**Quantity:** 10 µg

**Concentration:** 0.15 µg/µl

**Source:** Human

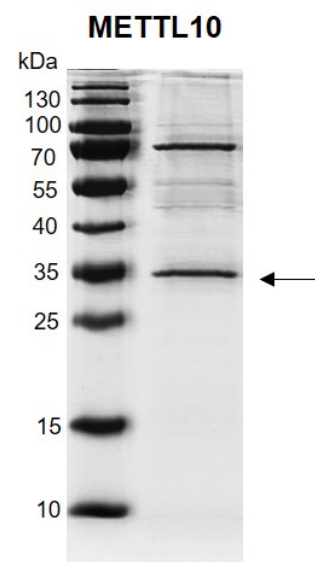
**Buffer Contents:** Recombinant METTL10 protein is supplied in 25 mM HEPES-NaOH pH 7.5, 300 mM NaCl, 10% glycerol, 0.04% Triton X-100, and 0.5 mM TCEP.

**Background:** METTL10 (Methyltransferase Like 10), also called as EEF1AKMT2 (EEF1A Lysine Methyltransferase 2), is a member of METTL family proteins. It has a protein-lysine methyltransferase activity which selectively catalyzes the trimethylation of EEF1A at Lys-318.

**Protein Details:** Recombinant METTL10 protein was expressed in baculovirus expression system as the full length protein (accession number NP\_997719.2) with a C-terminal FLAG tag. The molecular weight of the protein is 33.5 kDa.

**Application Notes:** This product was manufactured as described in Protein Details. Where possible, Active Motif has developed functional or activity assays for recombinant proteins. Additional characterization such as enzyme kinetic activity assays, inhibitor screening or other biological activity assays may not have been performed for every product. All available data this product is shown.

**Storage and Guarantee:** Recombinant proteins in solution are temperature sensitive and must be stored at -80°C to prevent degradation. Avoid repeated freeze/thaw cycles and keep on ice when not in storage. This product is for research use only and is not for use in diagnostic procedures. This product is guaranteed for 6 months from date of arrival.



**Recombinant METTL10 protein gel**  
11% SDS-PAGE Coomassie staining  
MW: 33.5 kDa  
Purity: >45%