

## Recombinant MLLT3 / AF9 (1-138) protein, His/FLAG Tag

---

**Catalog No:** 81192

**Lot No:** 20718001

**Expressed In:** *E. coli*

**Quantity:** 20 µg

**Concentration:** 0.2 µg/µl

**Source:** Human

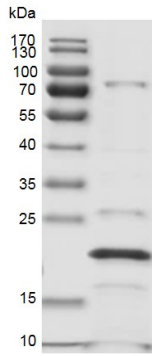
**Buffer Contents:** Recombinant MLLT3 / AF9 (1-138) protein, His / FLAG-Tag is supplied in 25 mM Tris-HCl pH 7.4, 500 mM NaCl, 10% glycerol, 1 mM Na-EDTA and 0.5 mM TCEP.

**Background:** MLLT3 (Myeloid/Lymphoid Or Mixed-Lineage Leukemia; translocated To, 3), also known as AF9 or-YEATS3, is a component of the super elongation complex (SEC), a complex required to increase the catalytic rate of RNA polymerase II transcription by suppressing transient pausing by the polymerase at multiple sites along the DNA. It specifically recognizes and binds acylated histone H3, with a marked preference for histone H3 that is crotonylated. Crotonylation marks active promoters and enhancers and confers resistance to transcriptional repressors. In the SEC complex, MLLT3 is required to recruit the complex to crotonylated histones.

**Protein Details:** Recombinant human MLLT3 / AF9 (1-138) protein, His / FLAG-Tag that includes amino acids 1-138 (accession number NP\_004520.2) was expressed in *E. coli* cells with an N-terminal 6xHis-Tag and a C-terminal FLAG-Tag. The molecular weight of the protein is 20.8 kDa.

**Application Notes:** Recombinant MLLT3 / AF9 (1-138) protein, His / FLAG tag is suitable for use in binding assay, inhibitor screening, and selectivity profiling.

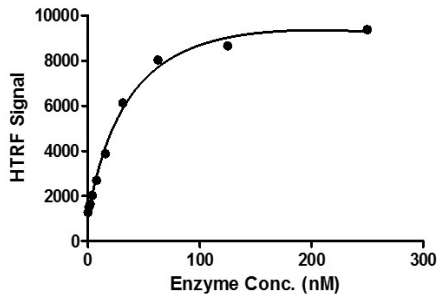
**Storage and Guarantee:** Recombinant proteins in solution are temperature sensitive and must be stored at -80°C to prevent degradation. Avoid repeated freeze/thaw cycles and keep on ice when not in storage. This product is for research use only and is not for use in diagnostic procedures. This product is guaranteed for 6 months from date of arrival.



**Recombinant MLLT3 / AF9 (1-138) protein, His / FLAG-Tag**

10% SDS-PAGE Coomassie staining  
 MW: 20.8 kDa  
 Purity: >79%

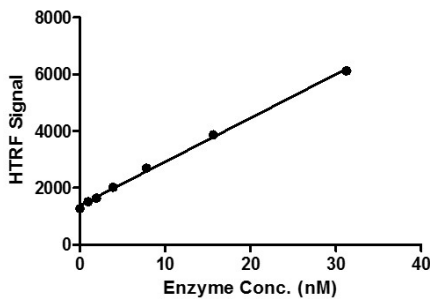
**MLLT3 / AF9 (1-138) Titration**



**Recombinant MLLT3 / AF9 (1-138) protein, His / FLAG-Tag activity assay**

3  $\mu$ M H3K27cr (crotonylated Lysine 27) peptide was incubated with different concentrations of MLLT3 / AF9 (1-138) protein, in a 10  $\mu$ l system containing 50 mM HEPES-NaOH pH 7.4, 0.1% BSA for 1 hr, then 10  $\mu$ l FLAG antibody and SA-XL665 mixture (each 1:100 dilution in binding buffer) was added to each reaction system and incubated for 30 min. All operations and reactions were performed at room temperature. HTRF assay was used for detection.

**MLLT3 / AF9 (1-138) Titration**



**Recombinant MLLT3 / AF9 (1-138) protein, His / FLAG-Tag activity assay**

3  $\mu$ M H3K27cr (crotonylated Lysine 27) peptide was incubated with different concentrations of MLLT3 / AF9 (1-138) protein, in a 10  $\mu$ l system containing 50 mM HEPES-NaOH pH 7.4, 0.1% BSA for 1 hr, then 10  $\mu$ l FLAG antibody and SA-XL665 mixture (each 1:100 dilution in binding buffer) was added to each reaction system and incubated for 30 min. All operations and reactions were performed at room temperature. HTRF assay was used for detection.