

Recombinant G6PDH protein

Catalog No: 81133, 81833

Lot No: 14318001

Expressed In: *E. coli*

Quantity: 100, 1000 µg

Concentration: 1.5 µg/µl

Source: *L. mesenteroides*

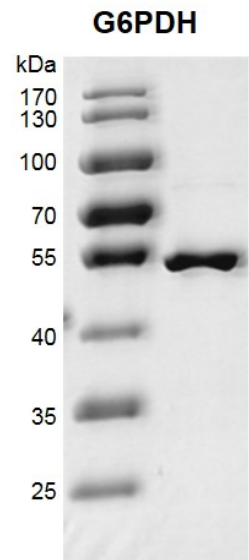
Buffer Contents: Recombinant G6PDH protein is supplied in 25 mM Tris pH 8.0, 300 mM NaCl, 10% glycerol, 0.5 mM TCEP.

Background: G6PDH (Glucose-6-Phosphate Dehydrogenase, also known as G6PD) catalyzes the rate-limiting step of the oxidative pentose-phosphate pathway, which represents a route for the dissimilation of carbohydrates besides glycolysis. The main function of G6PDH is to provide reducing power (NADPH) and pentose phosphates for fatty acid and nucleic acid synthesis.

Protein Details: Recombinant G6PDH protein was expressed in *E. coli* cells as the full length protein (accession number AAA25265.1) with an N-terminal 6x His tag. The molecular weight of the protein is 56.6 kDa.

Application Notes: This protein is the component of cofactor recycling systems for NADPH. It is used to catalyze the oxidation of glucose 6-phosphate to 6-phosphogluconolactone.

Storage and Guarantee: Recombinant proteins in solution are temperature sensitive and must be stored at -80°C to prevent degradation. Avoid repeated freeze/thaw cycles and keep on ice when not in storage. This product is for research use only and is not for use in diagnostic procedures. This product is guaranteed for 6 months from date of arrival.



Recombinant G6PDH protein gel
10% SDS-PAGE Coomassie staining
MW: 56.6 kDa
Purity: > 90%