

## LSD1 / KDM1A antibody (pAb)

---

**Catalog Nos:** 61607, 61608

**RRID:** AB\_2793699

**Isotype:** IgG

**Application(s):** ChIP, WB

**Reactivity:** Human, Mouse, Rat

**Volumes:** 100 µl, 10 µl

**Purification:** Affinity Purified

**Host:** Rabbit

**Molecular Weight:** 110 kDa

---

**Background:** LSD1 (Lysine-specific demethylase 1, also designated KDM1A) was identified as a subunit of different complexes (such as CTBP, CoREST, NuRD or BRAF35). LSD1 is involved in transcriptional repression of genes through the demethylation of Histone H3K4me1 and Histone H3K4me2, a methylation site associated with transcriptional activation. LSD1 is also involved in transcriptional activation through the demethylation of Histone H3K9me1 and Histone H3K9me2, a modification often associated with transcriptional repression. LSD1 is also able to demethylate Lys370me1 and Lys370me2 in the regulatory domain of the tumor suppressor p53. LSD1 is a flavin-dependent amine oxidase.

**Immunogen:** This antibody was raised against a recombinant protein corresponding to human LSD1 / KDM1A.

**Buffer:** Purified IgG in PBS with 50% glycerol and 0.02% sodium azide. Sodium azide is highly toxic.

**Application Notes:**

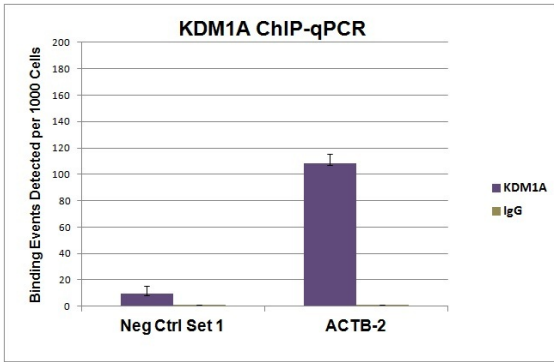
Validated Applications:

ChIP: 10 µl per ChIP

WB: 1:500 - 1:1,000 dilution

**Storage and Guarantee:** Some products may be shipped at room temperature. This will not affect their stability or performance. Avoid repeated freeze/thaw cycles by aliquoting items into single-use fractions for storage at -20°C for up to 2 years. Keep all reagents on ice when not in storage. This product is guaranteed for 12 months from date of receipt.

This product is for research use only and is not for use in diagnostic procedures.



**LSD1 / KDM1A antibody (pAb) tested by ChIP.**

ChIP was performed using the ChIP-IT<sup>®</sup> High Sensitivity Kit (Cat. No. 53040) with 20 µg of chromatin from K562 cells and 10 µl LSD1 / KDM1A antibody. ChIP DNA was used in qPCR with the control primer pairs or gene-specific primer pairs as indicated. Data are presented as Binding Events Detected per 1000 Cells using Active Motif's Epigenetic Services normalization scheme which accounts for primer efficiency and the amount of chromatin used in the ChIP reaction.

**LSD1 / KDM1A antibody (pAb) tested by Western blot.**

Nuclear extract of HeLa cells (30 µg) probed with LSD1 / KDM1A antibody at a dilution of 1:500.

