

RING1 antibody (pAb)

Catalog Nos: 61517, 61518

RRID: AB_2793666

Isotype: IgG

Application(s): WB

Reactivity: Human

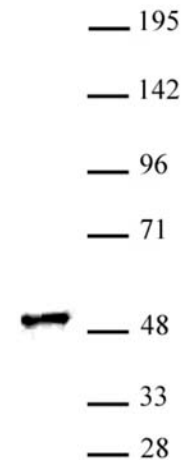
Volumes: 100 µl, 10 µl

Purification: Affinity Purified

Host: Rabbit

Molecular Weight: 50 kDa

Background: RING1 (Ring Finger Protein 1) constitutes one of the E3 ubiquitin-protein ligases that mediate monoubiquitination of 'Lys-119' of histone H2A, thereby playing a central role in histone code and gene regulation. H2A 'Lys-119' ubiquitination gives a specific tag for epigenetic transcriptional repression and participates in X chromosome inactivation of female mammals. Essential component of a Polycomb group (PcG) multiprotein PRC1-like complex, a complex class required to maintain the transcriptionally repressive state of many genes, including Hox genes, throughout development. PcG PRC1 complex acts via chromatin remodeling and modification of histones, rendering chromatin heritably changed in its expressibility. Compared to RNF2/RING2, it does not have the main E3 ubiquitin ligase activity on histone H2A, and it may rather act as a modulator of RNF2/RING2 activity.



Immunogen: This antibody was raised against a peptide within the C-terminal region of human RING1.

Buffer: Purified IgG in PBS with 30% glycerol and 0.035% sodium azide. Sodium azide is highly toxic.

Application Notes:

Applications Validated by Active Motif:

WB*: 1:250 - 1:500 dilution

*Note: many chromatin-bound proteins are not soluble in a low salt nuclear extract and fractionate to the pellet. Therefore, we recommend a High Salt / Sonication Protocol when preparing nuclear extracts for Western blot.

Storage and Guarantee: Some products may be shipped at room temperature. This will not affect their stability or performance. Avoid repeated freeze/thaw cycles by aliquoting items into single-use fractions for storage at -20°C for up to 2 years. Keep all reagents on ice when not in storage. This product is guaranteed for 12 months from date of receipt.

This product is for research use only and is not for use in diagnostic procedures.

RING1 antibody (pAb) tested by Western blot.

Nuclear extract of Raji cells (25 µg) probed with RING1 antibody (pAb) at a dilution of 1:500.