

KLF6 antibody (mAb)

Catalog Nos: 61297, 61298

RRID: AB_2615029

Clone: 2A2

Isotype: IgG2a

Application(s): IHC, WB

Reactivity: Human

Quantities: 100 µg, 10 µg

Purification: Protein A Chromatography

Host: Mouse

Concentration: 1 µg/µl

Molecular Weight: 33 kDa

Background: **KLF6** (Kruppel-like factor 6, BCD1, COPEB, CPBP, ST12) is a transcriptional activator (By similarity). Binds a GC box motif. Could play a role in B-cell growth and development. This antibody recognizes the 33 kDa wild type KLF6, 26 kDa KLF6 splice variant and the 30 kDa KLF6 splice variant.

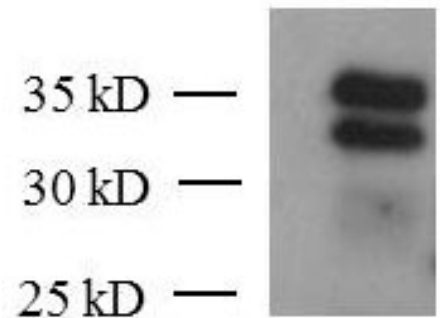
Immunogen: This KLF6 antibody was raised against a recombinant protein corresponding to amino acids 28-199 of human Kruppel-like factor 6 (KLF6).

Buffer: Purified IgG in PBS with 30% glycerol and 0.035% sodium azide. Sodium azide is highly toxic.

Application Notes:

Storage and Guarantee: Some products may be shipped at room temperature. This will not affect their stability or performance. Avoid repeated freeze/thaw cycles by aliquoting items into single-use fractions for storage at -20°C for up to 2 years. Keep all reagents on ice when not in storage. This product is guaranteed for 12 months from date of receipt.

This product is for research use only and is not for use in diagnostic procedures.



KLF6 antibody (mAb) (Clone 2A2) tested by Western blot.

Cell extract of metastatic prostate cell line (30 µg) was probed with KLF6 mAb (Clone 2A2).