

PIM2 antibody (mAb)

Catalog Nos: 61159, 61160

RRID: AB_2615012

Clone: CHU61

Isotype: IgG2a

Application(s): IHC, WB

Reactivity: Human

Quantities: 100 µg, 10 µg

Purification: Protein G Chromatography

Host: Rat

Concentration: 1 µg/µl

Molecular Weight: 37 kDa

Background: PIM2 is a serine/threonine protein kinase in the CAMK family. PIM2 promotes cell survival in response to a variety of proliferative signals through activation of the I-κB kinase/NF-κB pathway. It also inhibits apoptosis through the phosphorylation of BAD. PIM2 has been implicated in the transformation of both T and B lymphocytes and is highly expressed in human leukemia and lymphomas, as well as adenocarcinomas and hepatocellular carcinomas.

Immunogen: This PIM2 antibody was raised against a recombinant protein corresponding to human PIM2.

Buffer: Purified rat IgG in PBS with 30% glycerol and 0.035% sodium azide. Sodium azide is highly toxic.

Application Notes:

Applications Validated by Active Motif:

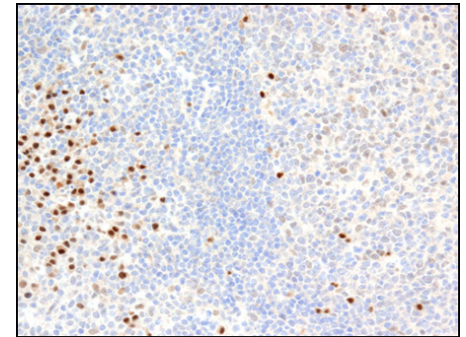
IHC: 2 µg/ml dilution

WB: 0.5 - 2 µg/ml dilution

The antibody is suitable for IHC on paraffin sections. Frozen sections are not recommended. This antibody is also available as an AbFlex® engineered recombinant antibody. For details on the corresponding AbFlex Recombinant Antibody, see Catalog No. 91239.

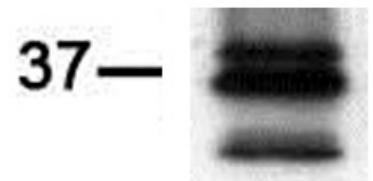
Storage and Guarantee: Some products may be shipped at room temperature. This will not affect their stability or performance. Avoid repeated freeze/thaw cycles by aliquoting items into single-use fractions for storage at -20°C for up to 2 years. Keep all reagents on ice when not in storage. This product is guaranteed for 12 months from date of receipt.

This product is for research use only and is not for use in diagnostic procedures.



PIM2 antibody (mAb) tested by Immunohistochemistry

PIM2 detected by immunohistochemistry in paraffin-embedded human tonsil cells.



PIM2 antibody (mAb) tested by Western blot

Ramos cell extract (100 µg per lane) probed with PIM2 antibody (mAb).