

SIP1 antibody (pAb)

Catalog Nos: 61113, 61114**RRID:** AB_2793511**Isotype:** IgG**Application(s):** WB**Reactivity:** Human**Volumes:** 100 µl, 10 µl**Purification:** Affinity Purified**Host:** Rabbit**Molecular Weight:** 180 kDa

Background: SIP1 (Smad-interacting protein 1, aka ZEB2, Zinc finger E-box-binding homeobox 2) is a sequence-specific DNA binding protein and transcriptional repressor that is involved in normal embryonic development of neural structures and the neural crest. SIP1 belongs to the delta-EF1/Zfh1 family of 2-handed zinc finger/homeodomain proteins and contains a SMAD-binding domain, a homeodomain and two clusters of zinc fingers on the N- and C-termini. SIP1 interacts directly with activated forms of SMAD1, SMAD2 and SMAD3, as well as CBX4 and CTBP1. Mutations in the SIP1 gene cause a form of Hirschsprung disease (HSCR).

Immunogen: This SIP1 antibody was raised against a peptide from the N-terminus of human SIP1.

Buffer: Purified IgG in PBS with 30% glycerol and 0.035% sodium azide. Sodium azide is highly toxic.

Application Notes:

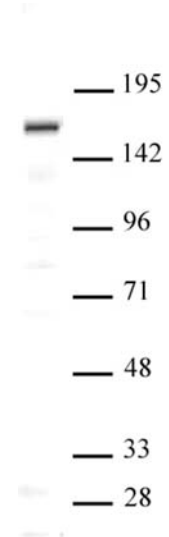
Applications Validated by Active Motif:

WB*: 1:500 - 1:1,000 dilution

*Note: many chromatin-bound proteins are not soluble in a low salt nuclear extract and fractionate to the pellet. Therefore, we recommend a High Salt / Sonication Protocol when preparing nuclear extracts for Western blot.

Storage and Guarantee: Some products may be shipped at room temperature. This will not affect their stability or performance. Avoid repeated freeze/thaw cycles by aliquoting items into single-use fractions for storage at -20°C for up to 2 years. Keep all reagents on ice when not in storage. This product is guaranteed for 12 months from date of receipt.

This product is for research use only and is not for use in diagnostic procedures.

**SIP1 antibody (pAb) tested by Western blot**

Nuclear extract of Saos-2 cells (20 µg per lane) probed with SIP1 antibody (pAb) at a dilution of 1:500.