

CHD1 antibody (pAb)

Catalog Nos: 39729, 39730

RRID: AB_2793323

Isotype: Serum

Application(s): WB

Reactivity: Human, Mouse

Volumes: 100 µl, 10 µl

Purification: None

Host: Rabbit

Molecular Weight: 220 kDa

Background: CHD (Chromo-ATPase/Helicase-DNA-binding) proteins, which are ATP-dependent chromatin remodeling factors implicated in RNA polymerase II transcriptional regulation, are characterized by the presence of a double chromodomains (Chromatin Organization Modifier) and SNF2-related helicase/ATPase domains. The CHD1/CHD2 sub-family of CHD proteins also contain a C-terminal DNA binding domain that recognizes AT-rich sequences. CHD proteins alter gene expression possibly by modification of chromatin structure thus altering access of the transcriptional apparatus to its chromosomal DNA template.

CHD1 has been shown to interact with histone H3 trimethylated at lysine 4 (H3K4Me3) and also is required for the maintenance of stem cell pluripotency.

Immunogen: This CHD1 antibody was raised against a recombinant protein corresponding to amino acids 251-467 of human CHD1.

Buffer: Rabbit serum containing 30% glycerol and 0.035% sodium azide. Sodium azide is highly toxic.

Application Notes:

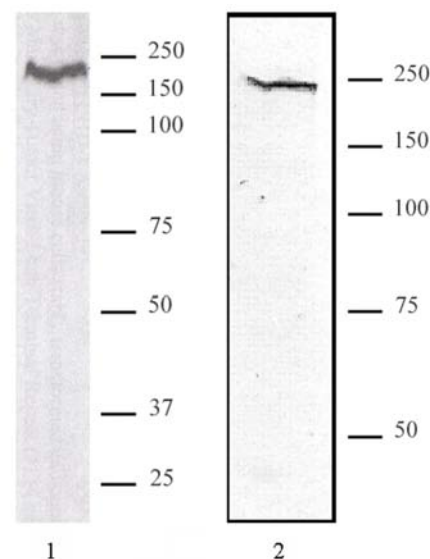
Applications Validated by Active Motif:

WB: 1:500 - 1:1,000 dilution

The addition of 0.05% Tween 20 in the blocking buffer and primary antibody incubation buffer is recommended to aid in detection by Western blot. Individual optimization may be required.

Storage and Guarantee: Some products may be shipped at room temperature. This will not affect their stability or performance. Avoid repeated freeze/thaw cycles by aliquoting items into single-use fractions for storage at -20°C for up to 2 years. Keep all reagents on ice when not in storage. This product is guaranteed for 12 months from date of receipt.

This product is for research use only and is not for use in diagnostic procedures.



CHD1 antibody (pAb) tested by Western blot.
Detection of CHD1 by Western blot analysis.
Lane 1: Nuclear extract of HeLa cells (50 µg).
Lane 2: Whole cell extract of adult mouse brain. Both probed with CHD1 antibody (pAb) at a 1:1,000 dilution.