

c-Jun antibody (pAb)

Catalog No: 39309

RRID: AB_2793224

Isotype: IgG

Application(s): ChIP, EMSA

Reactivity: Human, Mouse

Quantity: 100 µg

Purification: Affinity Purified

Host: Rabbit

Concentration: 0.5 µg/µl

Molecular Weight: 41 kDa

Background: c-Jun is a component of the AP-1 transcription factor complex in combination with c-Fos. It can be activated by phosphorylation from the JNK pathway.

Immunogen: This c-Jun antibody was raised against a synthetic peptide corresponding to amino acid residues 20-37 of human c-Jun.

Buffer: PBS containing 0.2% gelatin, 0.01% thimersol and 0.1% sodium azide. Thimersol and sodium azide are highly toxic.

Application Notes:

Validated Applications:

EMSA: 6 µl per assay

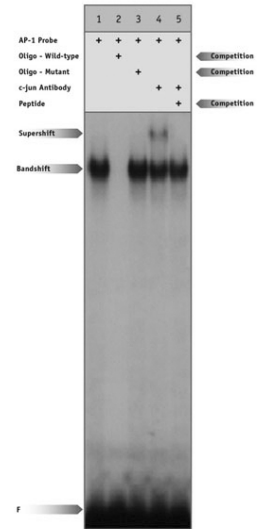
The addition of Tris-boric electrophoresis buffer for supershift assays is recommended. Individual optimization may be required.

Published Applications:

ChIP

Storage and Guarantee: Some products may be shipped at room temperature. This will not affect their stability or performance. Upon receipt, unconjugated antibodies may be stored at -20°C for up to 2 years. Fluorophore- & enzyme-conjugated antibodies should be stored at 4°C. Fluorophore-conjugated antibodies should be protected from light. Keep reagents on ice when not in storage; to avoid repeated freeze/thaw cycles, we recommend aliquoting items that will be stored frozen into single-use fractions prior to freezing. This product is guaranteed for 6 months from date of receipt.

This product is for research use only and is not for use in diagnostic procedures.



c-Jun antibody tested by supershift.

Detection of c-Jun by EMSA analysis. c-Jun antibody was used in a supershift assay (EMSA) with 3T6 Swiss albino nuclear extract (EMSA) with 3T6 Swiss albino nuclear extract (lane 4). Lane 5 demonstrates a supershift competition in the presence of neutralizing peptide.