

Recombinant KDM6C protein

Catalog No: 31575, 31975

Lot No: 29516001

Expressed In: Baculovirus

Quantity: 10, 1000 µg

Concentration: 0.2 µg/µl

Source: Human

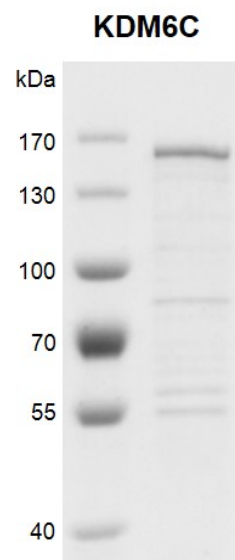
Buffer Contents: Recombinant KDM6C protein is supplied at a concentration of 0.2 µg/µl in 25 mM HEPES pH 7.5, 300 mM NaCl, 5% glycerol, 0.04% Triton X-100, 0.2 mM TCEP.

Background: KDM6C (lysine (K)-specific demethylase 6C), also known as UTY (Ubiquitously Transcribed Tetratricopeptide Repeat Containing, Y-Linked) is a KDM6 subfamily member that catalyzes demethylation of N-methylated histone 3 lysine 27 (H3K27), a mark important for transcriptional repression. The activity of UTY (KDM6C) is much weaker than KDM6A and KDM6B, due to point substitutions involved in substrate binding.

Protein Details: Recombinant KDM6C (accession number NP_009056.3) was expressed in Sf9 cells as full length protein and contains an N-terminal FLAG tag with an observed molecular weight of 152.9 kDa. The recombinant protein is >70% pure by SDS-PAGE.

Application Notes: Recombinant KDM6C is suitable for use in the study of enzyme kinetics, inhibitor screening, and selectivity profiling.

Storage and Guarantee: Recombinant proteins in solution are temperature sensitive and must be stored at -80°C to prevent degradation. Avoid repeated freeze/thaw cycles and keep on ice when not in storage. This product is for research use only and is not for use in diagnostic procedures. This product is guaranteed for 6 months from date of arrival.



Recombinant KDM6C protein gel. KDM6C protein was run on an 8% SDS-PAGE gel and stained with Coomassie Blue.