

## AbFlex® BRD9 antibody (rAb)

**Catalog Nos:** 91427, 91428**Application(s):** WB**Reactivity:** Human**Quantities:** 100 µg, 10 µg**Purification:** Protein A Chromatography**Host:** Rabbit**Isotype:** IgG**Concentration:** 1 µg/µl**Molecular Weight:** 85 kDa

**Background:** AbFlex® antibodies are recombinant antibodies (rAbs) that have been generated using defined DNA sequences to produce highly specific, reproducible antibodies. Each AbFlex antibody contains a 6xHis Tag, a Biotinylation Tag for enzymatic biotin conjugation using the biotin ligase, BirA, and a sortase recognition motif (LPXTG) to attach a variety of labels directly to the antibody including fluorophores, enzymatic substrates (HRP, AP), peptides, drugs as well as solid supports.

AbFlex® BRD9 antibody was expressed as full-length IgG with mouse immunoglobulin heavy and light chains (IgG2a isotype) in mammalian 293 cells.

**BRD9** (bromodomain containing 9) belongs to the BET subclass of proteins, which are characterized by two N-terminal bromodomains and one ET (Extra Terminal) domain. BRDs associate with chromatin through their bromodomains that recognize acetylated histone lysine residues. Bromodomains function as 'readers' of these epigenetic histone marks and regulate chromatin structure and gene expression by linking associated proteins to the acetylated nucleosomal targets. The ET domain functions as a protein binding motif and exerts atypical serine-kinase activity. The BET family consists of at least four members in mouse and human, BRD2 (also referred to as FSRG1, RING3), BRD3 (FSRG2, ORFX), BRD4 (FSRG4, MCAP/HUNK1), and BRDT (FSRG3, BRD6) that function in the regulation of transcriptional activation and chromatin remodeling. There are five isoforms of BRD9 that are produced by alternative splicing.

**Immunogen:** This antibody was raised against a peptide within the C-terminal region of human BRD9(bromodomain containing 9).

**Buffer:** Purified IgG in 140 mM Hepes, pH 7.5, 70 mM NaCl, 32 mM NaOAc, 30% glycerol and 0.035% sodium azide. Sodium azide is highly toxic.

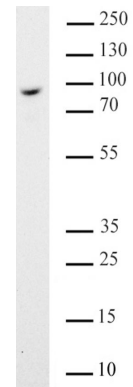
**Application Notes:**

Applications Validated by Active Motif:

WB: 0.5µg/mL-2µg/mL

**Storage and Guarantee:** Some products may be shipped at room temperature. This will not affect their stability or performance. Avoid repeated freeze/thaw cycles by aliquoting items into single-use fractions for storage at -20°C for up to 2 years. Keep all reagents on ice when not in storage. This product is guaranteed for 12 months from date of receipt.

This product is for research use only and is not for use in diagnostic procedures.



AbFlex® BRD9 antibody (rAb) tested by Western blot.

K562 whole cell extract (20 µg per lane) was probed with AbFlex® BRD9 antibody (0.5 µg/mL).