

Recombinant UBE2F protein

Catalog No: 81484, 81584

Expressed In: *E. coli*

Quantity: 100, 1000 µg

Source: Human

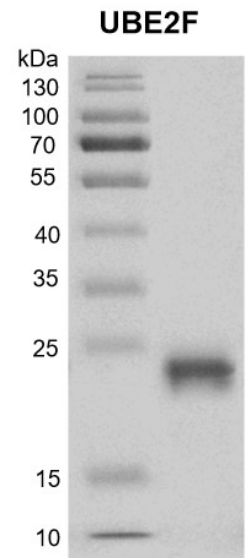
Buffer Contents: Recombinant UBE2F protein is supplied in 25 mM Tris 8.0, 300mM NaCl, 20% glycerol, 0.5 mM TCEP.

Background: UBE2F (NEDD8-conjugating enzyme UBE2F) also known as NCE2. **UBE2F** is a member of the E2 ubiquitin-conjugating enzyme family which is required for post-replicative DNA damage repair and plays an important role in various cellular processes. **UBE2F** can accept the ubiquitin-like protein NEDD8 from the UBA3-NAE1 E1 complex and catalyzes its covalent attachment to other proteins. The specific interaction with the E3 ubiquitin ligase RBX2, but not RBX1, suggests that the RBX2-UBE2F complex neddylates specific target proteins, such as CUL5.

Protein Details: Recombinant UBE2F protein that includes full length of human UBE2F protein (accession number NP_001265234.1) was expressed in *E. coli* and contains an N-terminal His tag with a molecular weight of 23.24 kDa. The purity of the protein is ≥ 95% by SDS-PAGE.

Application Notes: This product was manufactured as described in Protein Details. Where possible, Active Motif has developed functional or activity assays for recombinant proteins. Additional characterization such as enzyme kinetic activity assays, inhibitor screening or other biological activity assays may not have been performed for every product. All available data this product is shown.

Storage and Guarantee: Recombinant proteins in solution are temperature sensitive and must be stored at -80°C to prevent degradation. Avoid repeated freeze/thaw cycles and keep on ice when not in storage. This product is for research use only and is not for use in diagnostic procedures. This product is guaranteed for 6 months from date of arrival.



Recombinant UBE2F protein
12.5% SDS-PAGE Coomassie staining
MW: 23.24 kDa kDa
Purity: ≥ 95%