

Recombinant METTL25 protein

Catalog No: 81089, 81789

Lot No: 31617001

Expressed In: Baculovirus

Quantity: 20, 1000 µg

Concentration: 0.2 µg/µl

Source: Human

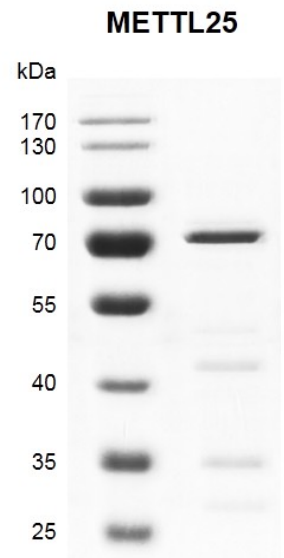
Buffer Contents: Recombinant METTL25 protein is supplied in 25 mM HEPES-NaOH pH 7.5, 300 mM NaCl, 10% glycerol, 0.04% Triton X-100 and 0.5 mM TCEP.

Background: METTL25 (Methyltransferase-like protein 25 isoform 1), also known as C12orf26 (Chromosome 12 Open Reading Frame 26), is a probable S-adenosyl-L-methionine-dependent methyltransferase.

Protein Details: Recombinant human METTL25 protein was expressed in a baculovirus expression system as the full length protein (accession number NP_115606.2) with an N-terminal FLAG tag. The molecular weight of the protein is 69.5 kDa.

Application Notes: This protein is suitable for use in binding assays, inhibitor screening, and selectivity profiling.

Storage and Guarantee: Recombinant proteins in solution are temperature sensitive and must be stored at -80°C to prevent degradation. Avoid repeated freeze/thaw cycles and keep on ice when not in storage. This product is for research use only and is not for use in diagnostic procedures. This product is guaranteed for 6 months from date of arrival.



Recombinant METTL25 protein gel
10% SDS-PAGE Coomassie staining
MW: 69.5 kDa

Purity: >80%