

## Recombinant METTL6 protein

**Catalog No:** 81023, 81723

**Lot No:** 15117001

**Expressed In:** Baculovirus

**Quantity:** 20, 1000 µg

**Concentration:** 0.2 µg/µl

**Source:** Human

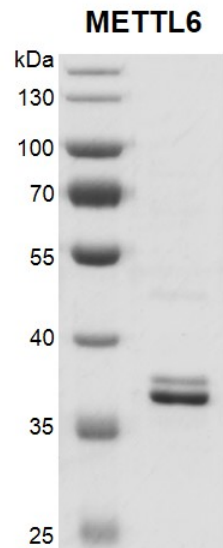
**Buffer Contents:** Recombinant METTL6 protein is supplied at a concentration of 0.2 µg/µl in 25 mM HEPES pH 7.5, 300 mM NaCl, 5% glycerol, 0.04% Triton X-100, 0.2 mM TCEP.

**Background:** METTL6 (methyltransferase-like 6) contains a conserved S-adenosylmethionine-binding motif, It is a potential SAM-dependent methyltransferase.

**Protein Details:** Recombinant METTL6 protein was expressed in a baculovirus expression system as the full length protein (accession number NP\_689609.2) with an N-terminal FLAG tag. The molecular weights of METTL6 is 34.5 kDa.

**Application Notes:** Recombinant METTL6 protein is suitable for use in enzyme kinetics, inhibitor screening, and selectivity profiling.

**Storage and Guarantee:** Recombinant proteins in solution are temperature sensitive and must be stored at -20°C to prevent degradation. Avoid repeated freeze/thaw cycles and keep on ice when not in storage. This product is for research use only and is not for use in diagnostic procedures. This product is guaranteed for 6 months from date of arrival.



**Recombinant METTL6 protein gel.**

10% SDS-PAGE Coomassie staining

MW: 34.5 kDa

Purity: ≥80%