

EZH1 antibody (pAb)

Catalog Nos: 61583, 61584

RRID: AB_2793687

Isotype: IgG

Application(s): WB

Reactivity: Mouse

Volumes: 100 µl, 10 µl

Purification: Affinity Purified

Host: Rabbit

Molecular Weight: 100 kDa

Background: **EZH1** (Enhancer Of Zeste Homolog 1) is a Polycomb group (PcG) protein. Catalytic subunit of the PRC2/EED-EZH1 complex, which methylates 'Lys-27' of histone H3, leading to transcriptional repression of the affected target gene. Able to mono-, di- and trimethylate 'Lys-27' of histone H3 to form H3K27me1, H3K27me2 and H3K27me3, respectively. Required for embryonic stem cell derivation and self-renewal, suggesting that it is involved in safeguarding embryonic stem cell identity. Compared to EZH1-containing complexes, it is less abundant in embryonic stem cells, has weak methyltransferase activity and plays a less critical role in forming H3K27me3, which is required for embryonic stem cell identity and proper differentiation.

Immunogen: This antibody was raised against a peptide within the N-terminal region of human EZH1.

Buffer: Purified IgG in PBS with 30% glycerol and 0.035% sodium azide. Sodium azide is highly toxic.

Application Notes:

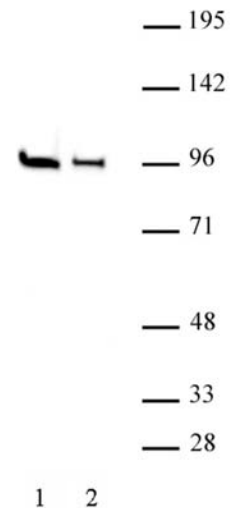
Applications Validated by Active Motif:

WB*: 1:1,000 - 1:2,500 dilution

*Note: many chromatin-bound proteins are not soluble in a low salt nuclear extract and fractionate to the pellet. Therefore, we recommend a High Salt / Sonication Protocol when preparing nuclear extracts for Western blot. The addition of 0.05% Tween 20 in the blocking buffer and primary antibody incubation buffer is recommended to aid in detection by Western blot.

Storage and Guarantee: Some products may be shipped at room temperature. This will not affect their stability or performance. Avoid repeated freeze/thaw cycles by aliquoting items into single-use fractions for storage at -20°C for up to 2 years. Keep all reagents on ice when not in storage. This product is guaranteed for 12 months from date of receipt.

This product is for research use only and is not for use in diagnostic procedures.



EZH1 antibody (pAb) tested by Western blot.

Nuclear extract (20 µg) of P19 (Lane 1) and mouse ES cells (Lane 2) probed with EZH1 antibody at a 1:500 dilution.