

MED1 antibody (pAb)

Catalog Nos: 61065, 61066

RRID: AB_2714185

Isotype: IgG

Application(s): IP, WB

Reactivity: Human

Volumes: 100 µl, 10 µl

Purification: Affinity Purified

Host: Rabbit

Molecular Weight: 210 kDa

Background: MED1 (Mediator complex subunit 1, TRIP2, Thyroid receptor-interacting protein 2) is a component of the Mediator complex, a coactivator involved in the regulated transcription of most genes transcribed by RNA polymerase II. Mediator functions as a bridge to convey information from gene-specific regulatory proteins to the basal RNA polymerase II transcription machinery. Mediator is recruited to promoters by direct interactions with regulatory proteins and serves as a scaffold for the assembly of a functional pre-initiation complex with RNA polymerase II and the general transcription factors. MED1 is involved in supporting hematopoietic stem and/or progenitor cell function.

Immunogen: This MED1 antibody was raised against a peptide within the C-terminal region of human MED1.

Buffer: Purified IgG in 70 mM Tris (pH 8), 105 mM NaCl, 31 mM glycine, 0.07 mM EDTA, 30% glycerol and 0.035% sodium azide. Sodium azide is highly toxic.

Application Notes:

Applications Validated by Active Motif:

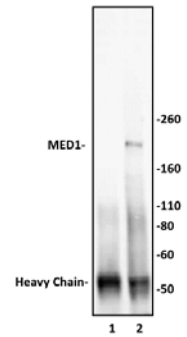
IP: 10 µl per IP

WB*: 1:500 - 1:2,000 dilution

*Note: many chromatin-bound proteins are not soluble in a low salt nuclear extract and fractionate to the pellet. Therefore, we recommend a High Salt / Sonication Protocol when preparing nuclear extracts for Western blot.

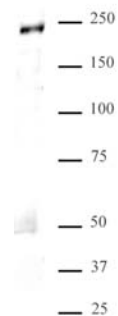
Storage and Guarantee: Some products may be shipped at room temperature. This will not affect their stability or performance. Avoid repeated freeze/thaw cycles by aliquoting items into single-use fractions for storage at -20°C for up to 2 years. Keep all reagents on ice when not in storage. This product is guaranteed for 12 months from date of receipt.

This product is for research use only and is not for use in diagnostic procedures.



MED1 antibody (pAb) tested by Immunoprecipitation.

10 µl of MED1 antibody was used to immunoprecipitate MED1 from 250 µg of HeLa nuclear cell extract (lane 2). 10 µl of rabbit IgG was used as a negative control (lane 1). The immunoprecipitated protein was detected by Western blotting using the MED1 antibody at a dilution of 1:2,000.



MED1 antibody (pAb) tested by Western blot.

Nuclear extract (30 µg) of HeLa cells probed with MED1 antibody at a dilution of 1:2,000.