

## AIB1 / SRC-3 antibody (pAb)

**Catalog Nos:** 39797, 39798

**RRID:** AB\_2615066

**Isotype:** IgG

**Application(s):** ChIP, WB

**Reactivity:** Human

**Volumes:** 100  $\mu$ l, 10  $\mu$ l

**Purification:** Affinity Purified

**Host:** Rabbit

**Molecular Weight:** 160 kDa

**Background:** AIB1 (Amplified in Breast Cancer 1, Steroid Receptor Coactivator-3, Nuclear Receptor Coactivator 3, SRC-3, NCOA3) is a chromatin-associated protein that interacts with nuclear hormone receptors to modify their activity as transcriptional activators. AIB1 has histone acetyltransferase (HAT) activity and recruits p300/CBP-associated factor (PCAF) and CREB binding protein (CBP) as part of a multisubunit co-activator complex. This protein is initially found in the cytoplasm but is translocated into the nucleus upon phosphorylation. It is involved in the coactivation of different nuclear receptors, such as GR, ER, RARs, RXRs, TRs, VDR and PPARs. It is also involved in the coactivation of the NF-kappa-B pathway via its interaction with the NFkB1 protein.

**Immunogen:** This AIB1 antibody was raised against a peptide derived from human AIB1/SRC-3.

**Buffer:** Purified IgG in 70 mM Tris (pH 8), 105 mM NaCl, 31 mM glycine, 0.07 mM EDTA, 30% glycerol and 0.035% sodium azide. Sodium azide is highly toxic.

**Application Notes:**

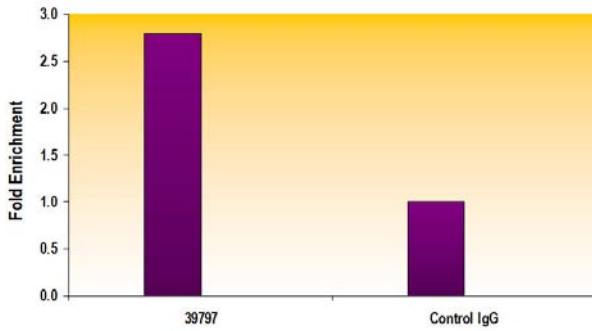
Applications Validated by Active Motif:

ChIP: 10  $\mu$ l per ChIP

WB: 1:500 - 1:2,000 dilution

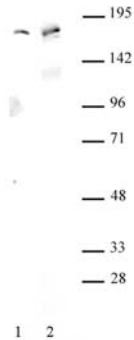
**Storage and Guarantee:** Some products may be shipped at room temperature. This will not affect their stability or performance. Avoid repeated freeze/thaw cycles by aliquoting items into single-use fractions for storage at -20°C for up to 2 years. Keep all reagents on ice when not in storage. This product is guaranteed for 12 months from date of receipt.

This product is for research use only and is not for use in diagnostic procedures.



**AIB1 antibody tested by ChIP analysis.**

Chromatin IP performed using the ChIP-IT<sup>®</sup> Express Kit (Catalog No. 53008) and MCF-7 chromatin ( $1.5 \times 10^6$  cell equivalents per ChIP) using 10  $\mu$ l of AIB1 / SRC-3 antibody or the equivalent amount of rabbit IgG as a negative control. Real time, quantitative PCR (RT-qPCR) was performed on DNA purified from each of the ChIP reactions using a primer pair specific for the pS2 gene promoter. Data are presented as Fold Enrichment of the ChIP antibody signal versus the negative control IgG using the ddCT method.



**AIB1 antibody (pAb) tested by Western blot.**

Detection of AIB1 by Western blot. Lane 1: HeLa whole-cell extract (30  $\mu$ g). Lane 2: Whole cell extract (30  $\mu$ g) of MCF-7 cells. Both probed with AIB1 antibody at a 1:500 dilution.