

Histone H1 antibody (pAb)

Catalog Nos: 39707, 39708

RRID: AB_2793314

Isotype: Serum

Application(s): ICC, IF, WB

Reactivity: Human, Wide Range Predicted

Volumes: 100 μ l, 10 μ l

Purification: None

Host: Rabbit

Molecular Weight: 31 kDa

Background: The nucleosome is the smallest subunit of chromatin and consists of 147 base pairs of DNA wrapped around an octamer of core histone proteins (two each of Histone H2A, Histone H2B, Histone H3 and Histone H4). Histone H1 is a linker histone, present at the interface between the nucleosome core and DNA entry/exit points; it is responsible for establishing higher-order chromatin structure. Chromatin is subject to a variety of chemical modifications, including post-translational modifications of the histone proteins and the methylation of cytosine residues in the DNA. Reported histone modifications include acetylation, methylation, phosphorylation, ubiquitylation, glycosylation, ADP-ribosylation, carbonylation and SUMOylation; they play a major role in regulating gene expression.

Immunogen: This Histone H1 antibody was raised against calf thymus histone H1.

Buffer: Rabbit serum containing 30% glycerol and 0.035% sodium azide. Sodium azide is highly toxic. For your convenience, an IgG version (Catalog No. 61201) of this antibody that was purified by Protein A Chromatography is also available.

Application Notes:

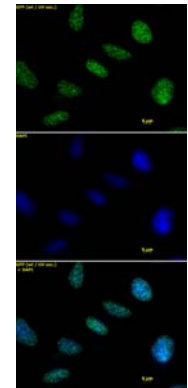
Applications Validated by Active Motif:

ICC/IF: 1:500 - 1:1,000 dilution

WB: 1:500 - 1:5,000 dilution

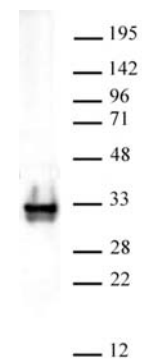
Storage and Guarantee: Some products may be shipped at room temperature. This will not affect their stability or performance. Avoid repeated freeze/thaw cycles by aliquoting items into single-use fractions for storage at -20°C for up to 2 years. Keep all reagents on ice when not in storage. This product is guaranteed for 12 months from date of receipt.

This product is for research use only and is not for use in diagnostic procedures.



Histone H1 antibody tested by immunofluorescence.

Detection of Histone H1 by immunofluorescence. HeLa cells were stained with Histone H1 antibody at a dilution of 1:1,000. Top panel: Histone H1 antibody staining. Middle panel: DAPI. Bottom panel: merge.



Histone H1 pAb tested by Western blot.

HeLa nuclear extract (20 μ g) probed with Histone H1 pAb (1:2,000 dilution).