

Mi-2 beta antibody (pAb)

Catalog Nos: 39289, 39290

RRID: AB_2614937

Isotype: Serum

Application(s): ICC, IF, IHC, WB

Reactivity: Human, Mouse

Volumes: 100 μ l, 10 μ l

Purification: None

Host: Rabbit

Molecular Weight: 240 kDa

Background: Mi-2 β (Mi-2beta, CHD4, chromodomain helicase DNA-binding protein 4) represents the major Mi-2 isoform present in the complex Mi-2/NuRD. This complex is a multi-subunit protein complex containing both histone deacetylase and nucleosome-dependent ATPase subunits. Current models predict that this complex functions primarily in transcriptional repression. In addition to the ATPase domain, Mi-2 beta contains a chromodomain and two PHD domains. Mi-2 beta interacts with BRG-1, a component of the SWI/SNF complex, and the RET finger protein (RFP).

Immunogen: This Mi-2B antibody was raised against a recombinant protein corresponding to amino acids 22-155 of mouse Mi-2 beta.

Buffer: Rabbit serum containing 30% glycerol and 0.035% sodium azide. Sodium azide is highly toxic.

Application Notes:

Validated Applications:

IHC (FFPE): 1:100

ICC/IF: 1:500 - 1:2,000 dilution

WB: 1:500 - 1:1,000 dilution

Published Applications:

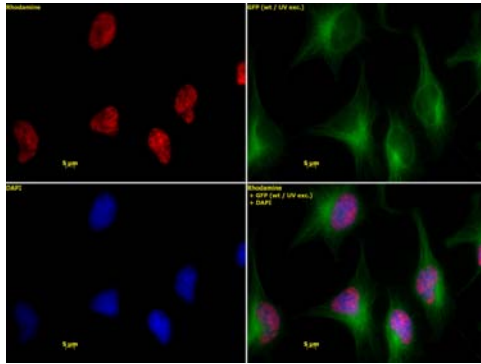
ICC/IF

IHC

See references for more information. Individual optimization may be required.

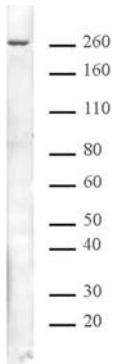
Storage and Guarantee: Some products may be shipped at room temperature. This will not affect their stability or performance. Avoid repeated freeze/thaw cycles by aliquoting items into single-use fractions for storage at -20°C for up to 2 years. Keep all reagents on ice when not in storage. This product is guaranteed for 12 months from date of receipt.

This product is for research use only and is not for use in diagnostic procedures.



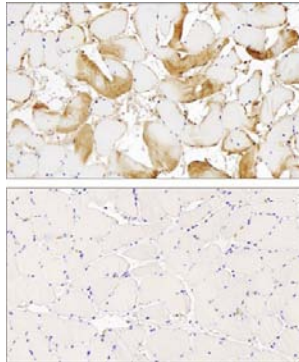
Mi-2 beta antibody tested by immunofluorescence.

Top left: HeLa cells stained with Mi-2 beta antibody (1:1,000). Top right: Same cells stained with alpha Tubulin mAb (Clone 5-B-1-2). Bottom left: Same cells stained with DAPI. Bottom right: Merge of all 3 images.



Mi-2 beta antibody tested by Western blot.

Whole-cell extract of mouse splenocytes stained with Mi-2 beta antibody (1:1,1000). Mi-2 beta antibody (pAb) tested by immunohistochemistry.



Mi-2 beta antibody (pAb) tested by Immunohistochemistry

Nuclear and cytoplasmic staining pattern is detected in Formalin-fixed, paraffin-embedded tissue sections from human skeletal muscle. Top Panel: Mi-2 beta antibody at 1:100 dilution. Bottom Panel: No primary antibody (2nd step antibody alone)