

Lamin B1 antibody (pAb)

Catalog No: 39095

RRID: AB_2615027

Isotype: Serum

Application(s): WB

Reactivity: Human, Mouse

Volume: 100 µl

Purification: None

Host: Rabbit

Molecular Weight: 66-70 kDa

Background: Lamin B1 (LMN, ADLD), along with the A and C Lamins are involved in maintaining the spatial organization of nuclear compartments. Depletion of Lamin B1 results in the disruption of RNA synthesis by RNA pol II, and eventually migration of chromatin to the nuclear periphery and dispersion of the nucleoli. The role of Lamin B1 in maintaining the nucleoskeleton may be to bind to nucleophosmin/B23.

Immunogen: This Lamin B1 antibody was raised against a full-length protein corresponding to human Lamin B1.

Buffer: Rabbit serum containing 0.1% sodium azide. Sodium azide is highly toxic.

Application Notes:

Validated Applications:

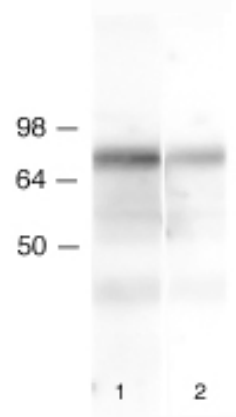
WB: 1:100 - 1:500 dilution

Published Applications: see references

For optimal results, primary antibody incubations should be performed at room temperature. The addition of 0.1% Tween 20 to all Blotto solutions may also reduce background. Individual optimization may be required.

Storage and Guarantee: Some products may be shipped at room temperature. This will not affect their stability or performance. Avoid repeated freeze/thaw cycles by aliquoting items into single-use fractions for storage at -20°C for up to 2 years. Keep all reagents on ice when not in storage. This product is guaranteed for 12 months from date of receipt.

This product is for research use only and is not for use in diagnostic procedures.



Lamin B1 antibody tested by Western blot.

Lamin B1 detection by Western blot analysis. Lamin B1 is detected in HeLa nuclear extracts using Lamin B1 rabbit polyclonal antibody at a 1:100 (lane 1) and a 1:500 (lane 2) dilution.